







# S700

Android-based smart reader

Supported integrations:  
Server Driven Integration (SDI) and iOS, Android, Javascript SDKs.

[www.stripe.com/terminal](http://www.stripe.com/terminal)

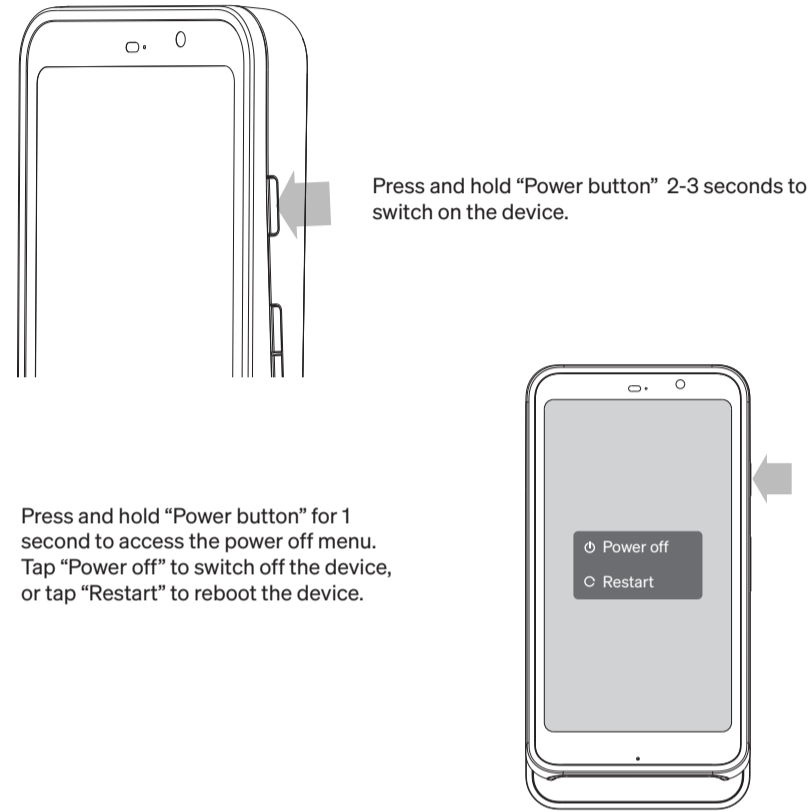
## Charging LED Indicator & Battery Icon on Screen

Power State	Charging LED indicator	Battery icon on the screen
Fully charged with power cable connected	Green	
Charging	Blue	
Device On, power cable disconnected	LED off	
Battery low (20% - 10%)	Yellow	
Battery critically low (9%-1%)	Red	
Battery drained (1%)	Red	
Device off	LED off	

## Package Contents

Device	x1
USB-C to USB-C cable	x1
Power Adaptor (For US, CA, JP version only)	x1
Legal Sheet	x1

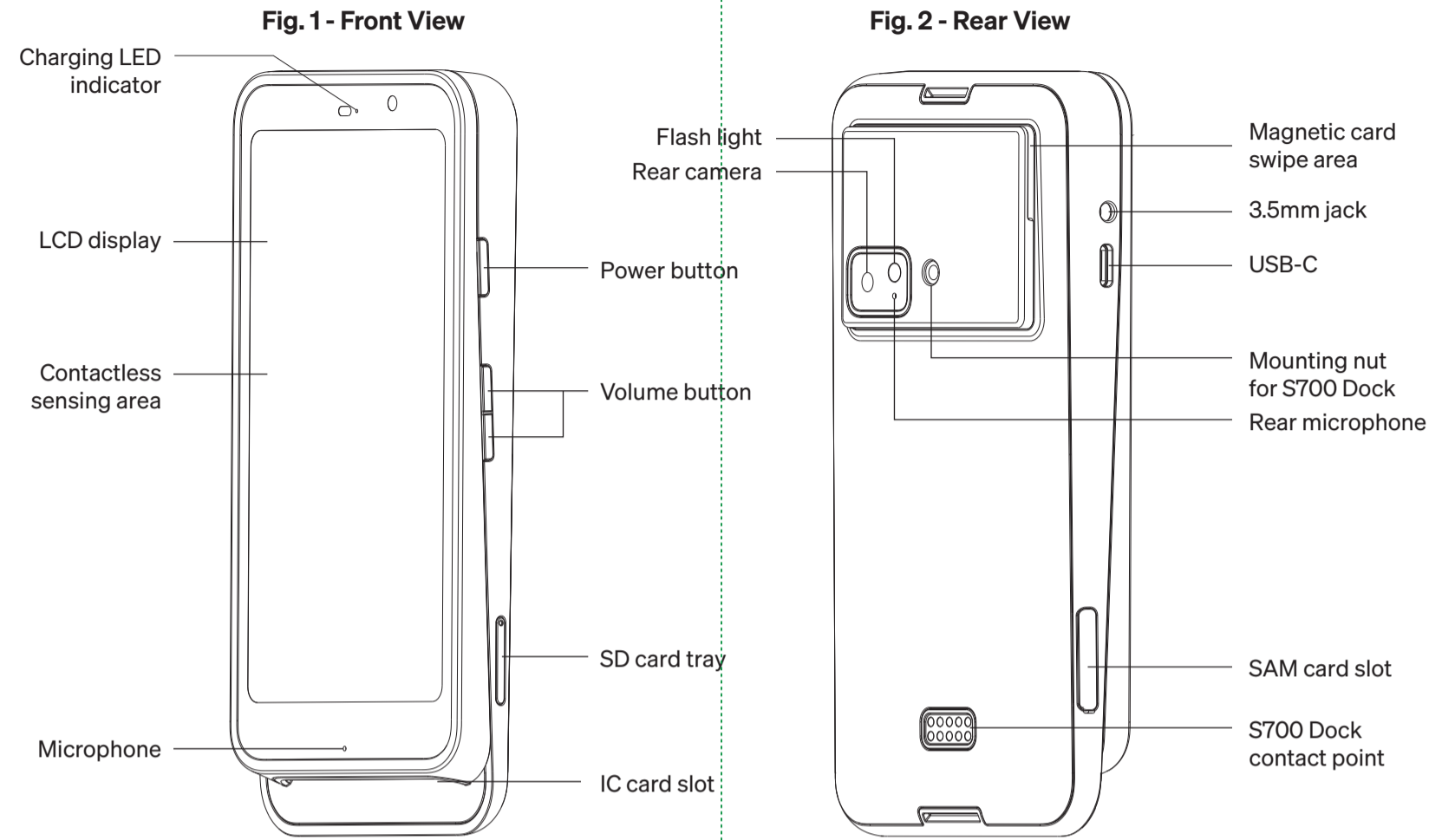
## Set Up Instructions



## Product Specification

Functions	
Processor	Octa-core CPU, 2.0 GHz
Memory	4 GB RAM
Storage	64 GB
Display	5.5" IPS LCD display with Gorilla glass, 1920 x 1080, 580 nit
Communication Interface	Bluetooth® 5.0, USB
Power & Battery	Lithium polymer rechargeable battery 4,920 mAh, 3.87V
Charging	via USB-C or Dock contact points
Swipe Speed	15cm/sec - 100cm/sec
Key Management	DUKPT, MK/SK
Encryption Algorithm	TDES, AES
Operating System	Android 10
Product Size	161.5 x 81.5 x 22mm / 6.36 x 3.21 x 0.87inch (approx.)
Product Weight	320g / 11.3oz (approx.)
Operating Temperature	0°C - 45°C (32°F - 113°F)
Storage Temperature	-20°C - 55°C (-4°F - 131°F)
Operating Humidity	5% - 90%, non-condensing
Storage Humidity	5% - 90%, non-condensing

## Reader Overview



## Troubleshooting

Problems	Recommendations
Device cannot read your card successfully	<ul style="list-style-type: none"> <li>Please check if the device has power when operating and ensure the device has network connection.</li> <li>Please check if the application instructs to swipe or insert card.</li> <li>Please ensure that there is no obstacle in the card slots.</li> <li>Please check if the magstripe or chip of the card is facing the right direction when swiping or inserting card.</li> <li>Please swipe or insert card with a more constant speed.</li> </ul>
Device cannot read your card successfully through NFC	<ul style="list-style-type: none"> <li>Please check if your card supports NFC payment.</li> <li>Please ensure if your card is placed within 4 cm range on top of the NFC marking.</li> <li>Please take out your NFC payment card from wallet or purse for payment to avoid any interference.</li> </ul>
Device has no response	<ul style="list-style-type: none"> <li>Please check if the device is fully charged.</li> <li>Please restart the device for retry.</li> </ul>
Device is frozen	<ul style="list-style-type: none"> <li>Please hold the power button for 12 seconds to restart.</li> </ul>
Device tampered	<ul style="list-style-type: none"> <li>A tampered device will trigger the self-protection mechanism by removing security keys data from the device and the device will stop operating.</li> <li>If the device is tampered, upon boot you will see a red watermark message indicating a tamper state.</li> <li>Contact your service provider for more information.</li> </ul>

## Caution & Important Notes

- Ensure the device is fully charged before use.
- Please ensure magnetic stripe/EMV chip of the card is facing the right direction when swiping or inserting card.
- The NFC card should be tapped within 4cm range on top of the reader mark.
- Don't drop, disassemble, tear, open, crush, bend, deform, puncture, shred, microwave, incinerate, paint or insert foreign object into the device. Doing any of which will damage the device and void the Warranty.
- Don't immerse the device into water and place near washbasins or any wet locations.
- Don't spill food or liquid on the devices. Don't attempt to dry the device with external heat sources, such as microwave or hair dryer. Don't use any corrosive solvent or water to clean the device. Recommend using dry cloth to clean the surface only.
- Don't use any sharp tools to point the internal components, connectors or contacts, doing which may lead to device malfunction and void the Warranty simultaneously.
- Risk of explosion if battery is damaged or removed. Dispose of used batteries according to the instructions.
- Replacement of a battery with an incorrect type that can defeat a safeguard (for example, in the case of some lithium battery types);
- Disposal of a battery into fire or a hot oven, or mechanically crushing or cutting of a battery, that can result in an explosion;
- Leaving a battery in an extremely high temperature surrounding environment that can result in an explosion or the leakage of flammable liquid or gas; and
- A battery subjected to extremely low air pressure that may result in an explosion or the leakage of flammable liquid or gas.

## Warranty

- Any damage or defects caused by a failure to follow the instruction which relate to this device or as the result of an accident, abuse, misuse, misapplication, product modification, improper voltage or current, acts of God, shipping damages or loss, or damage caused by service performed by anyone other than our company are expressly excluded from the warranty stated below.
- Please contact the dealer for any warranty or customer support services. Any repair of the device by yourself will void the warranty.
- Check [stripe.com/legal/terminal-purchase](http://stripe.com/legal/terminal-purchase) for the warranty and legal terms.

## California Proposition 65 Warning

**WARNING: Cancer and Reproductive Harm - [www.P65Warnings.ca.gov](http://www.P65Warnings.ca.gov)**



©2023 Stripe, Inc. All rights reserved. iOS is the trademark of Apple Inc. Android™ is a trademark of Google Inc. The Bluetooth® word mark and logos are registered trademarks owned by Bluetooth SIG, Inc. and any use of such marks by Stripe, Inc. is under license. Other trademarks and trade names are those of their respective owners. All details are subject to change without prior notice.

