

Reader S700 Attachment System

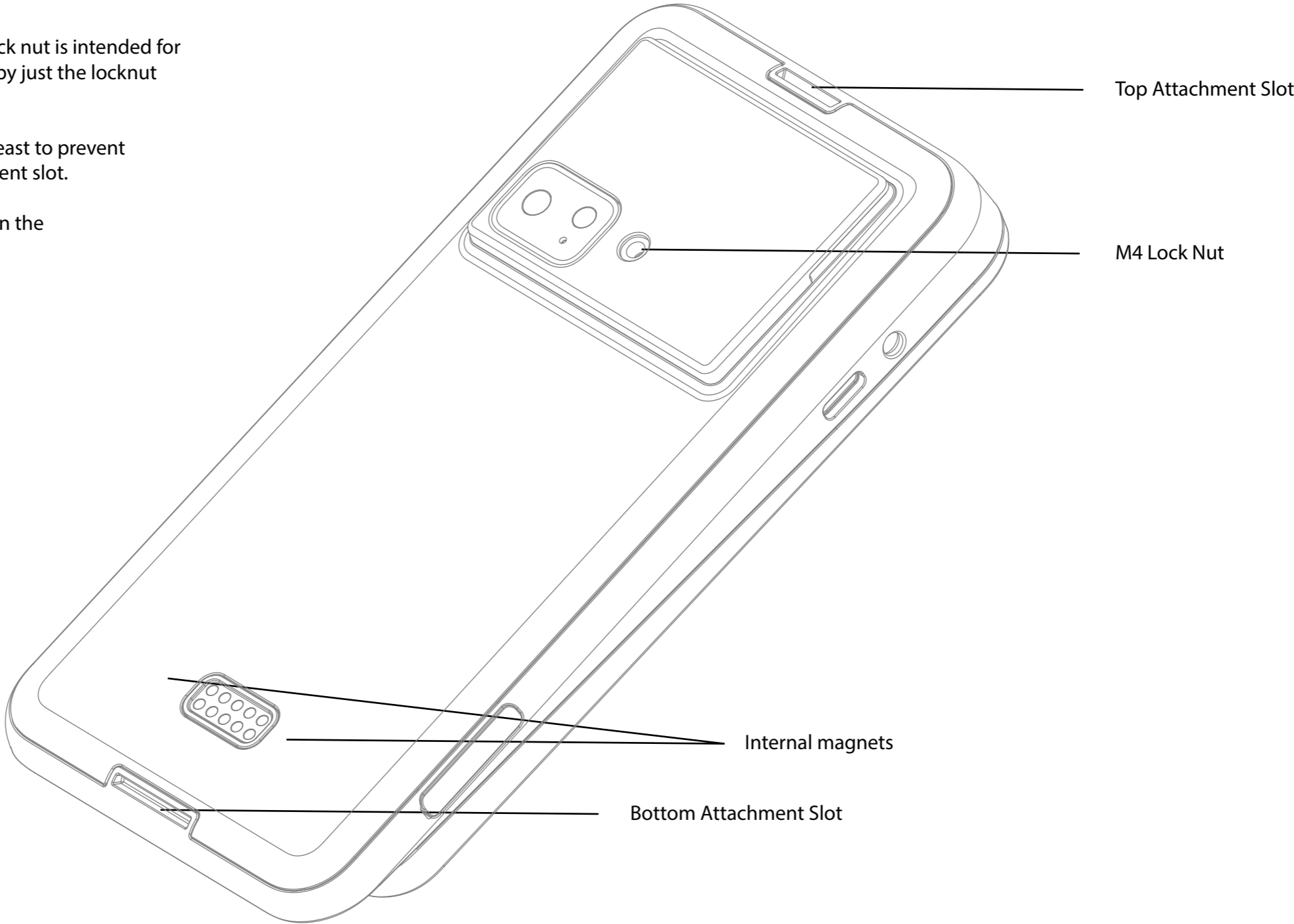
This document is intended to be used as a guideline for Stripe users to design their own bespoke mounting hardware.

Attachment Recommendations:

- 1. Do not attach the device via the lock nut alone. The lock nut is intended for locking and positioning of the device. Fixing the device by just the locknut may damage the lock nut/device.
- 2. The device should be fixed at 2 attachment points at least to prevent damaging the device. e.g. Lock nut and bottom attachment slot.
- 3. Recommendation of providing a supporting surface on the bottom of the device.

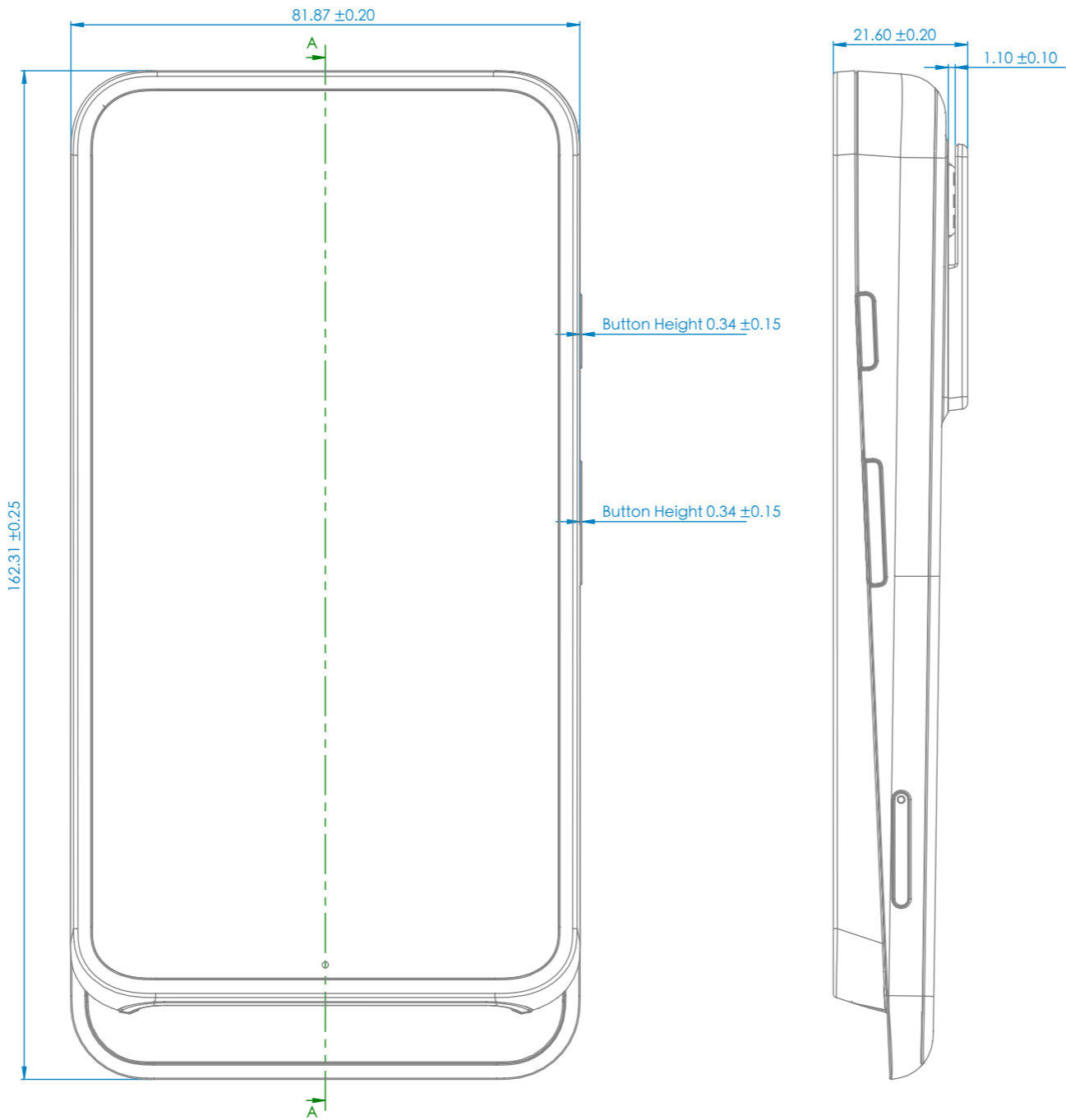
For more details please refer to 3D CAD file:

S700_Surface_ref.STEP



Reader S700 Attachment System

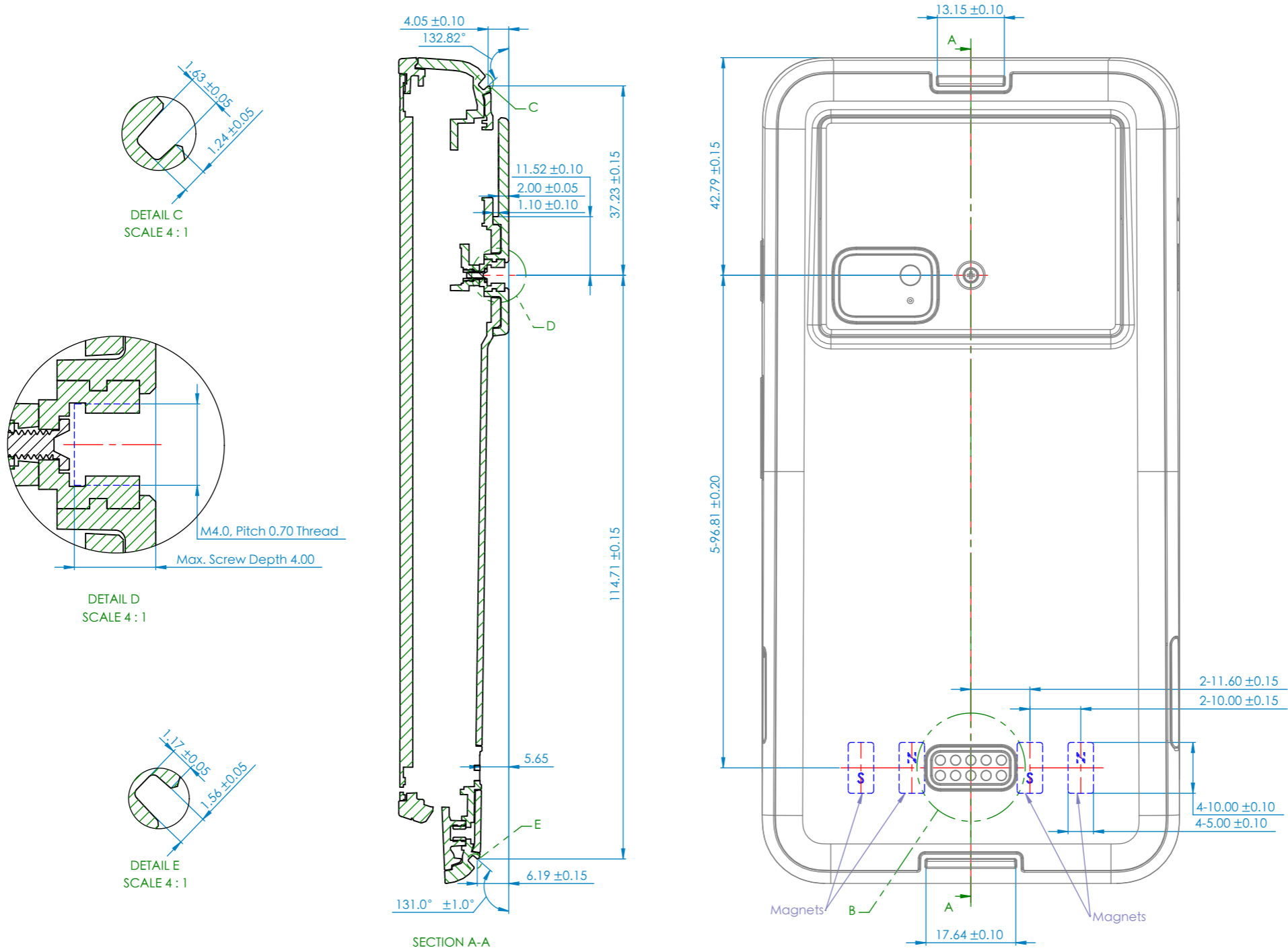
Tolerance Dimension Drawings



Disclaimer: You are solely responsible for the design and/or installation of any third party, non-Stripe brand S700 accessories.
Stripe is not responsible for any damage incurred to your S700 device as a result of improper installation of accessories not in accordance with this specification.

Reader S700 Attachment System

Tolerance Dimension Drawings



Disclaimer: You are solely responsible for the design and/or installation of any third party, non-Stripe brand S700 accessories.
Stripe is not responsible for any damage incurred to your S700 device as a result of improper installation of accessories not in accordance with this specification.